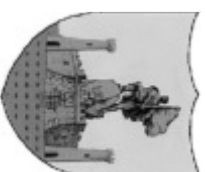


**MIRATOI
KRYETARI I BASHKISE VLORE
DRITAN LELI**



BASHKIA VLORE

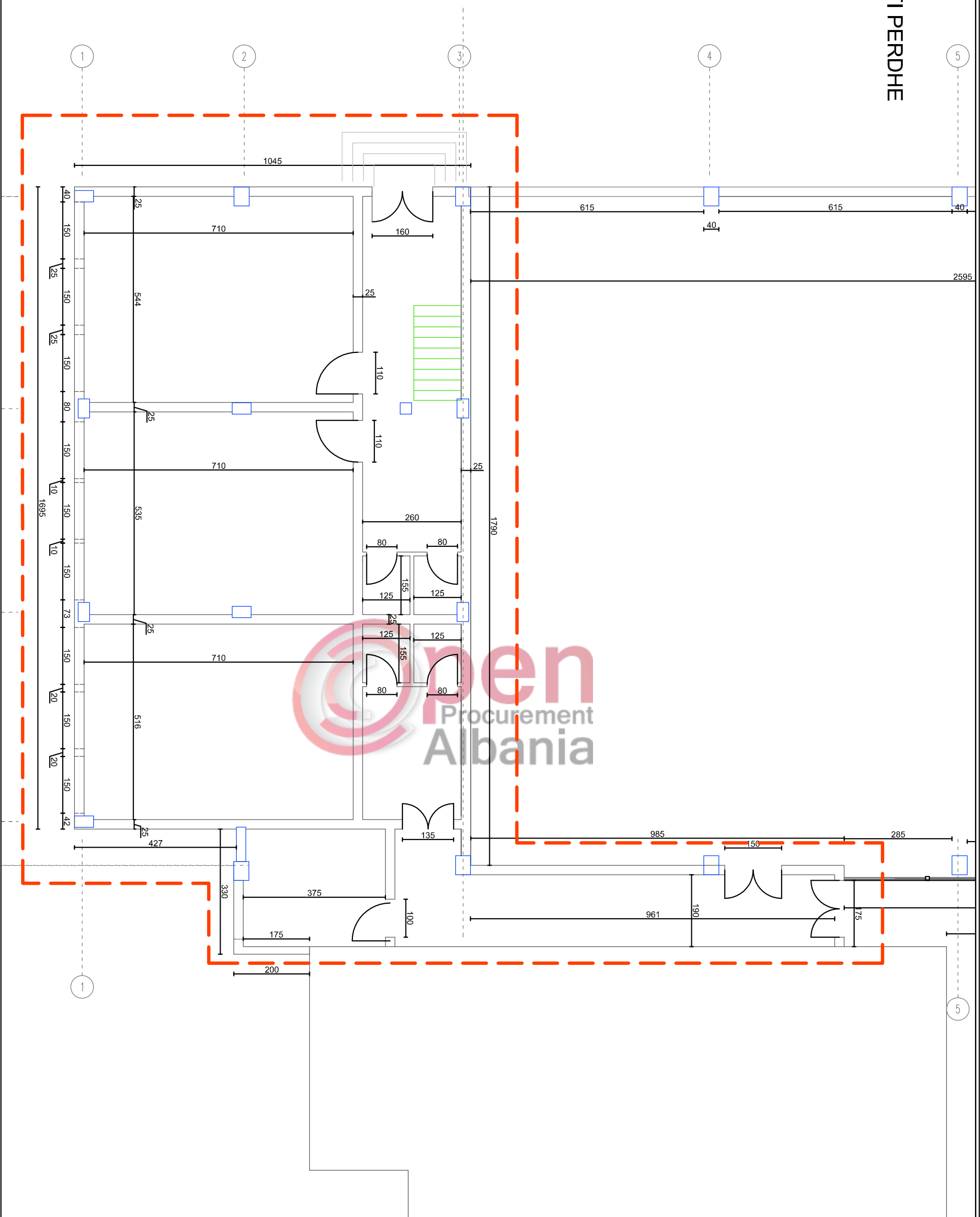
**Procurement
Albania**
DREJTORIA E PLANIFIKIMIT DHE KONTROLLIT
TË ZHVILLIMIT

NDERHYRJE RIPARIME DHE SISTEMIME NE SHKOLLAT E BASHKISE VLORE

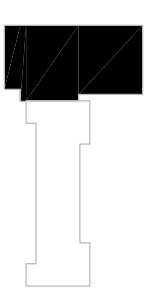
VITI 2018

GRUPI I PROJEKTIMIT:
Ark. Suela Abazaj
Ing. Struktivist: Ejdon Anataj
Ing. Struktivist: Mandi Karocleri
Topografi: Kismet Agalliu

KATI PERDHE



PALESTRA E SHKOLLËS
9-VJECARE "ISMAL QEMALI"



© 2017 by 'Open' Procurement Albania

BASHKIA VLORE

DREJTORIA E
PLANIFIKIMIT DHE
KONTROLLIT TE
ZHVILLIMIT

GRUPI I PROJEKTIMIT:

Ark. Suela Abazaj

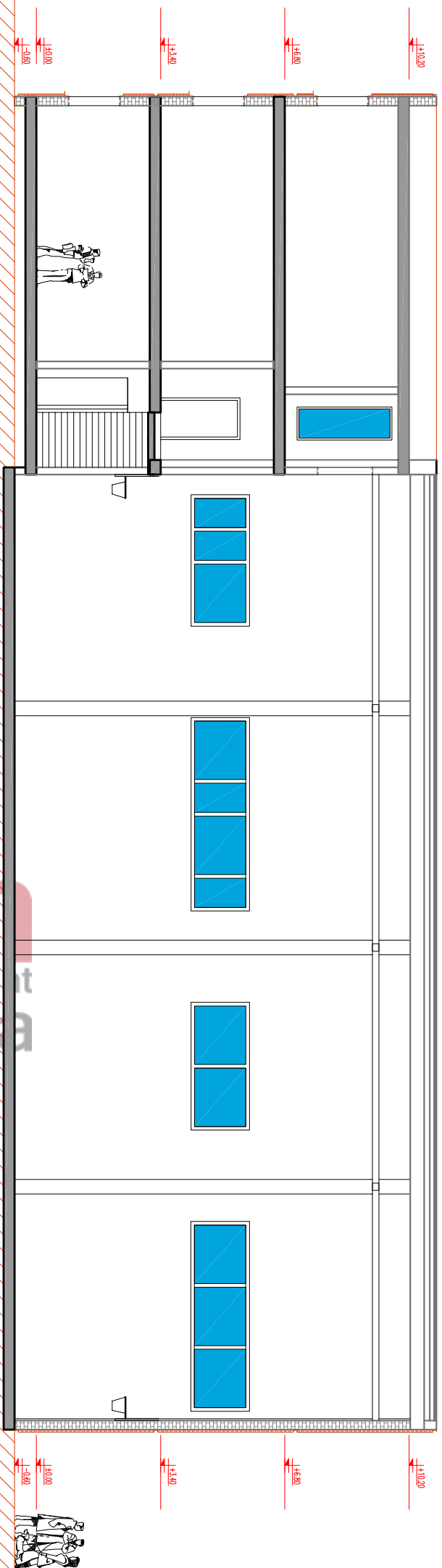
Ing Strukturst: Erjon Amataj

Ing Strukturst: Mandi Karoceri

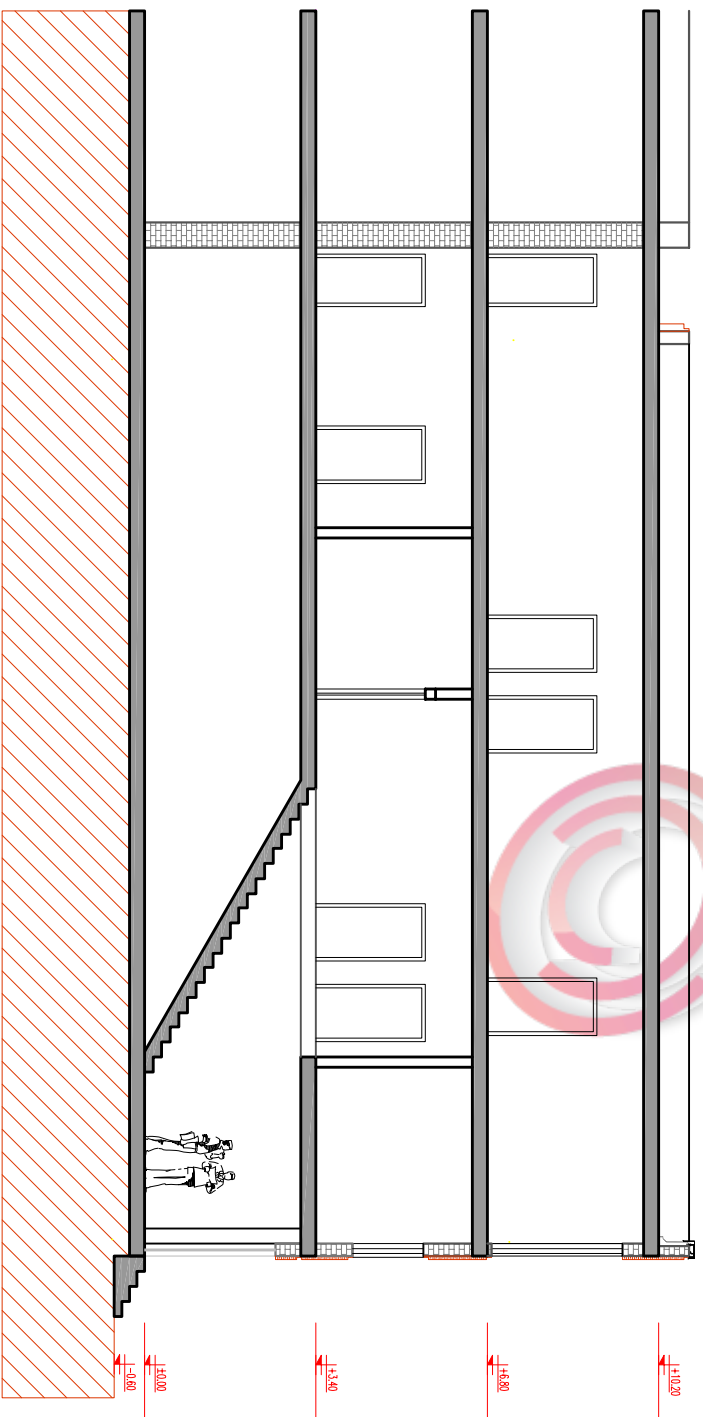
Ing Hidro: Ana Celaj

Topografi: Kismet Agalliu

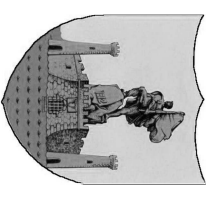
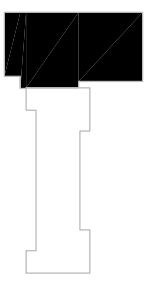
PRERUA 1-1



PRERUA C-C



PALESTRA E SHKOLLËS
9-VJECARE "ISMAL QEMALI"



BASHKIA VLORE

DREJTORIA E
PLANIFIKIMIT DHE
KONTROLLIT TË
ZHVILLIMIT

GRUPI I PROJEKTIMIT:

Ark. Suela Abazaj

Ing Strukturst: Erjon Amataj

Ing Strukturst: Mandi Karoceri

Ing Hidro: Ana Çelaj

Topografi: Kismet Agalliu

PROJEKT : *Paestra e shkollës 9 -vjeçare "Ismail Qemali"*

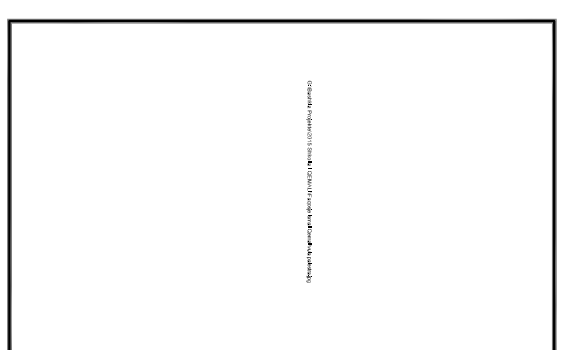
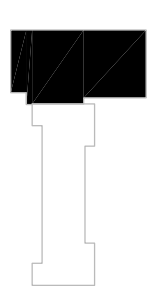
PRERJË

sh: 1:150

VLORE 2017

A-09

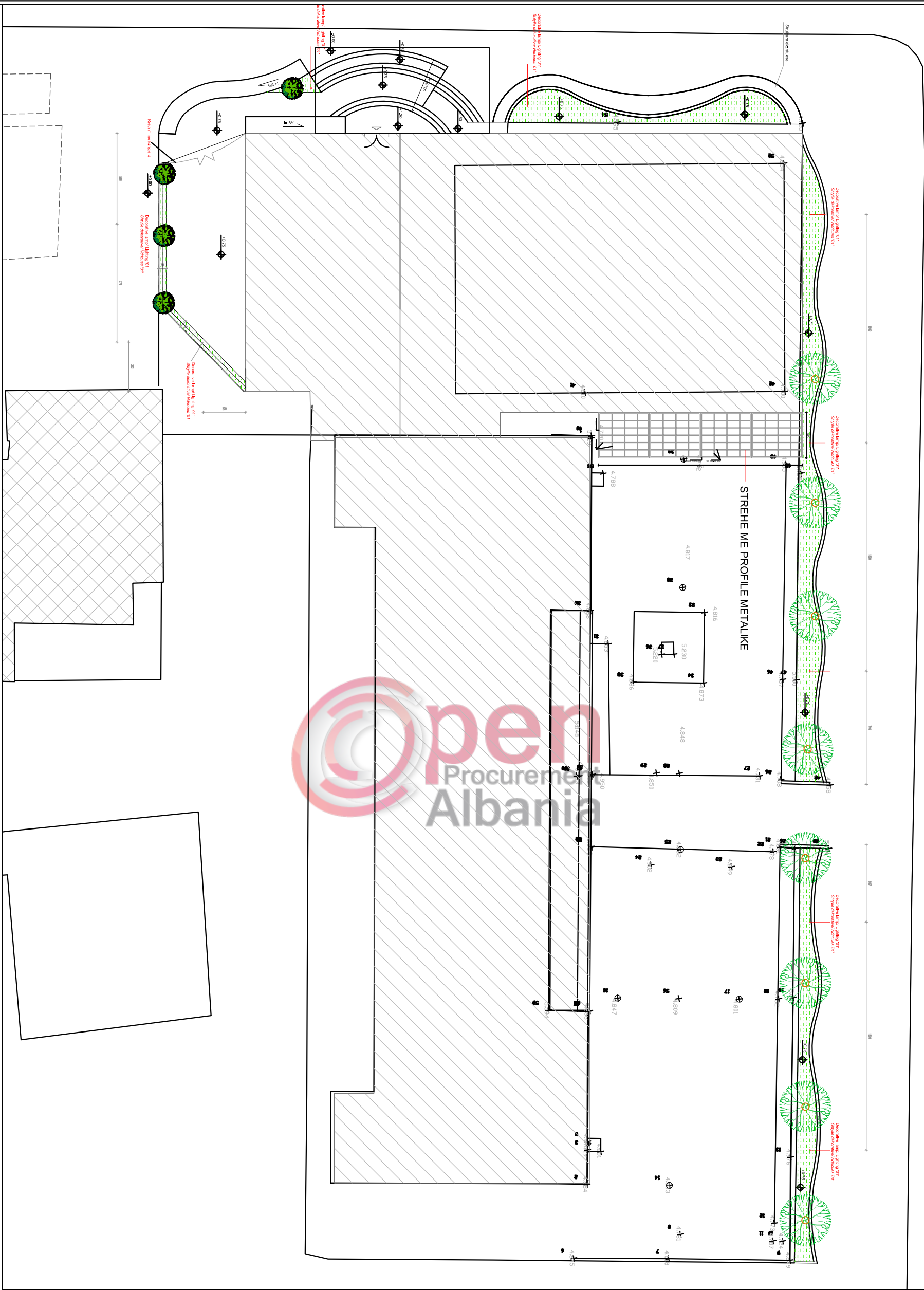
PALESTRA E SHKOLLËS
9-VJECARE "ISMAIL QEMALI"



BASHKIA VLORE

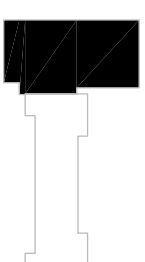
DREJTORIA E
PLANIFIKIMIT DHE
KONTROLLIT TË
ZHVILLIMIT

GRUPI I PROJEKTIMIT:
Ark. Suela Abazaj
Ing. Strukturst: Ejlon Amataj
Ing. Strukturst: Manfred Karocieri
Ing. Hidro: Ana Çelaj
Topograft: Kismet Agalliu

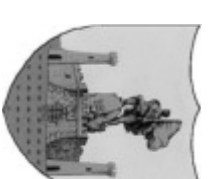


PROJEKT : *Palestra e shkolles 9 -vjecare "Ismail Qemali" (punime shitesë)*

PALESTRA E SHKOLLES
9-VJECARE "ISMAL QEMALI"



© 2017 Open Procurement Albania

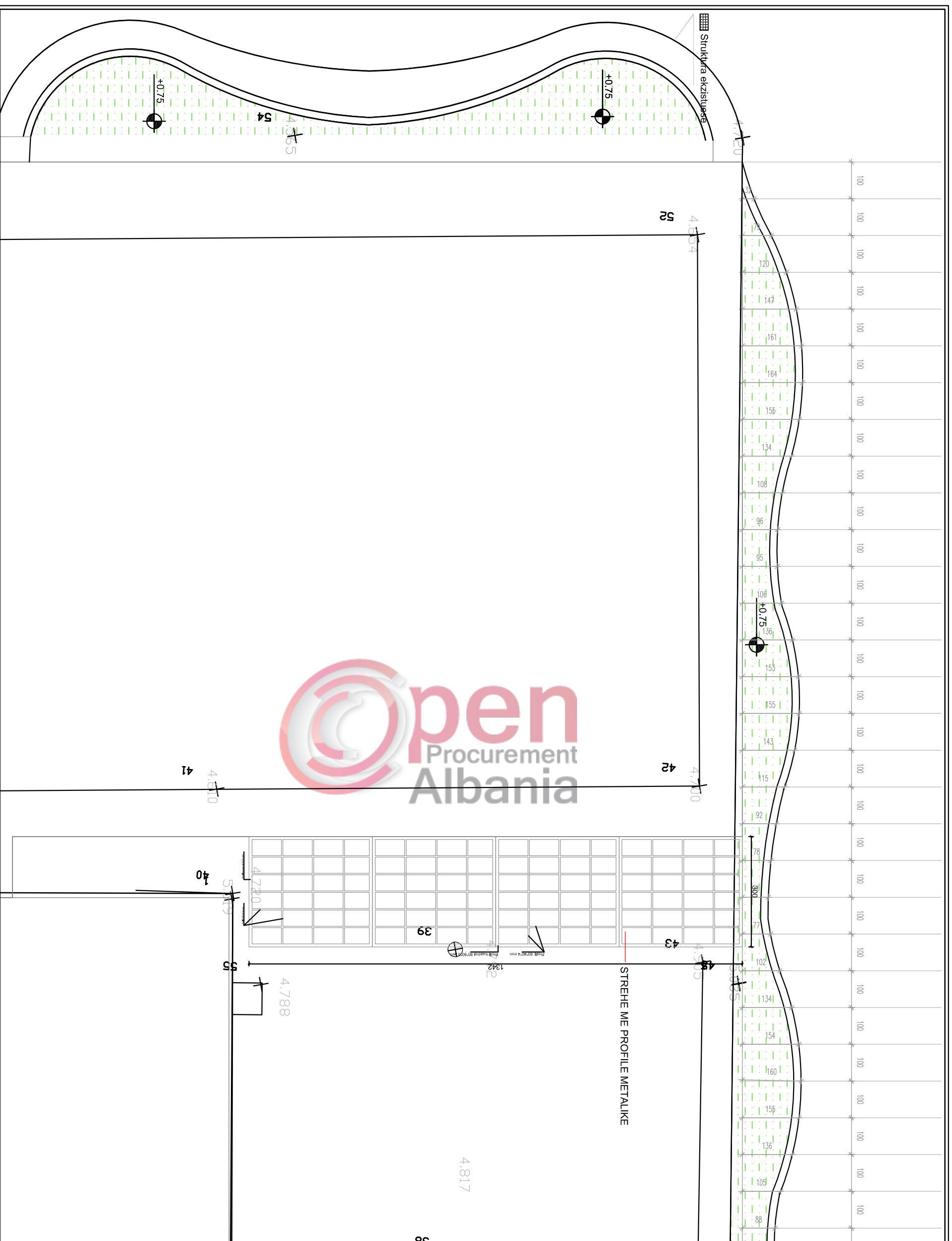


BASHKIA VLORE

DREJTORIA E
PLANIFIKIMIT DHE
KONTROLLIT TE
ZHVILLIMIT

GRUPI I PROJEKTIMIT:

Ark. Suela Abazaj
Ing. Struktivist: Eijon Amataj
Ing. Struktivist: Manafi Karocieri
Ing. Hidro: Ana Çelaj
Topograft: Kismet Agalliu



PROJEKT : *Palestra e shkollës 9 -vjeçare "Ismail Qemali" (punime shtesë)*

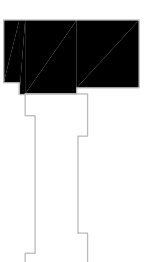
PLANI I SISTEMIMIT

sh: 1:100

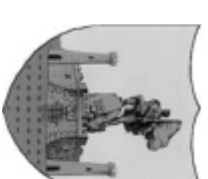
VLORE 2017

A-03

PALESTRA E SHKOLLES
9-VJECARE "ISMAIL QEMALI"



© 2017 Open Procurement Albania

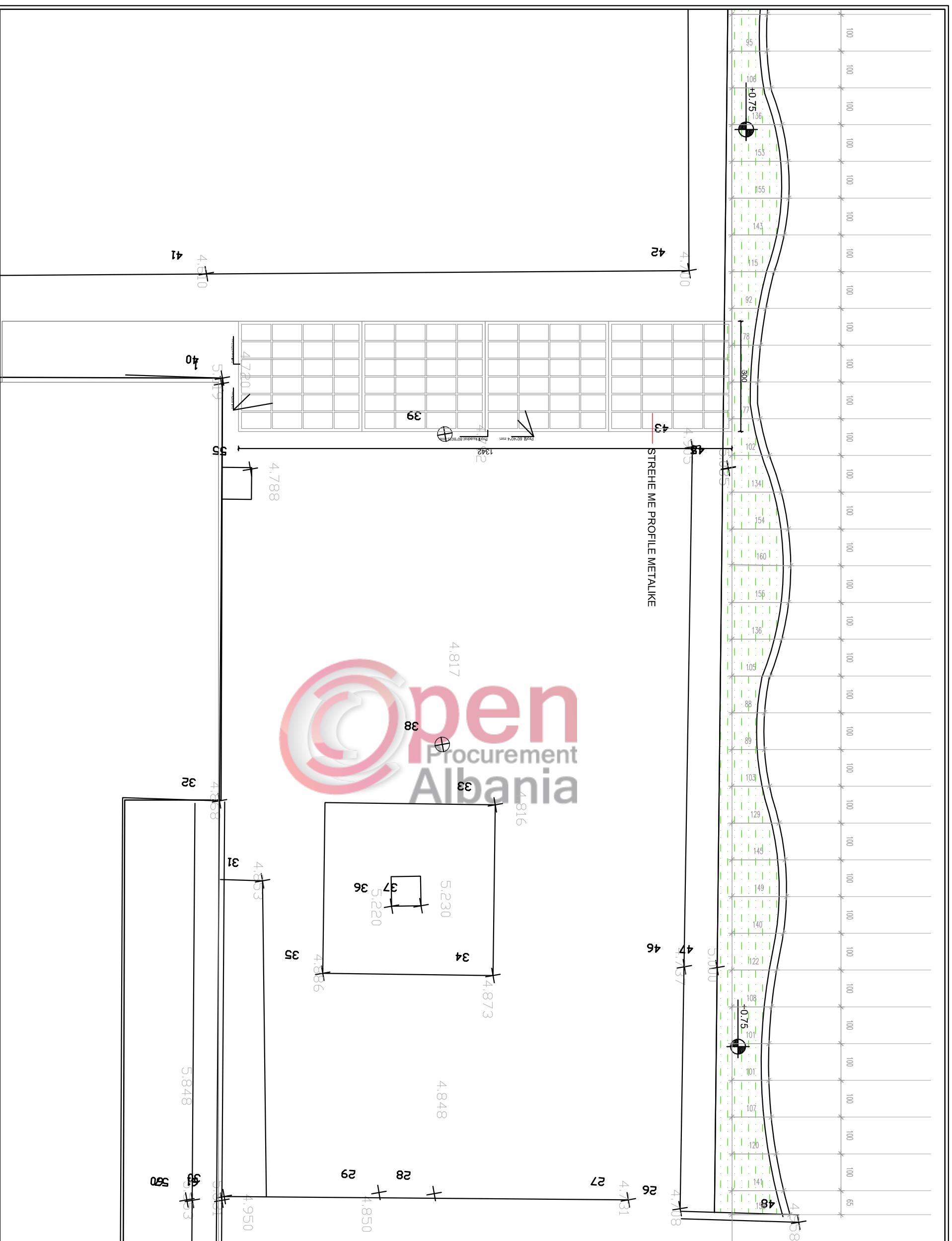


BASHKIA VLORE

DREJTORIA E
PLANIFIKIMIT DHE
KONTROLLIT TE
ZHVILLIMIT

GRUPI I PROJEKTIMIT:

Ark. Suela Abazaj
Ing. Strukturst: Eriq Anataj
Ing. Strukturst: Manfred Karocieri
Ing. Hidro: Ana Çelaj
Topograft: Kismet Agalliu



PROJEKT : *Paestra e shkollës 9 -vjeçare "Ismail Qemali" (punime shtesë)*

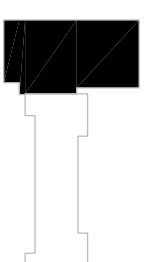
PLANI I SISTEMIMIT

sh: 1:100

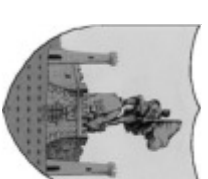
VLORE 2017

A-04

PALESTRA E SHKOLLES
9-VJECARE "ISMAIL QEMALI"



Shënim: Ngjyeshëria e kësaj planifikimi është e përcaktuar nga autoritetet kompetente.

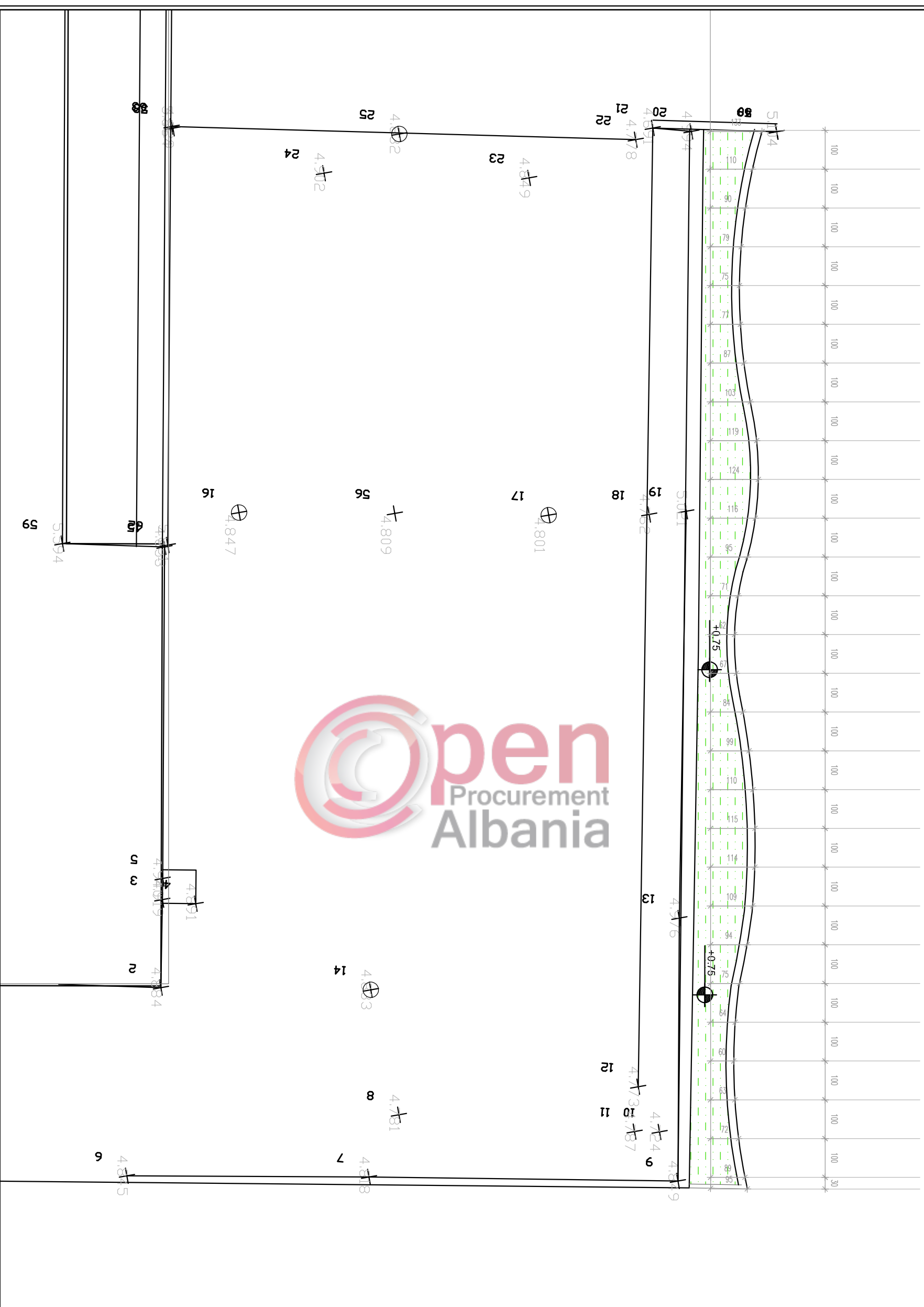


BASHKIA VLORE

DREJTORIA E
PLANIFIKIMIT DHE
KONTROLLIT TË
ZHVILLIMIT

GRUPI I PROJEKTIMIT:

Ark. Suela Abazaj
Ing. Strukturst: Ejdon Amataj
Ing. Strukturst: Manfred Karocieri
Ing. Hidro: Ana Çelaj
Topograft: Kismet Agalliu



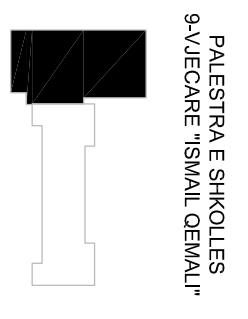
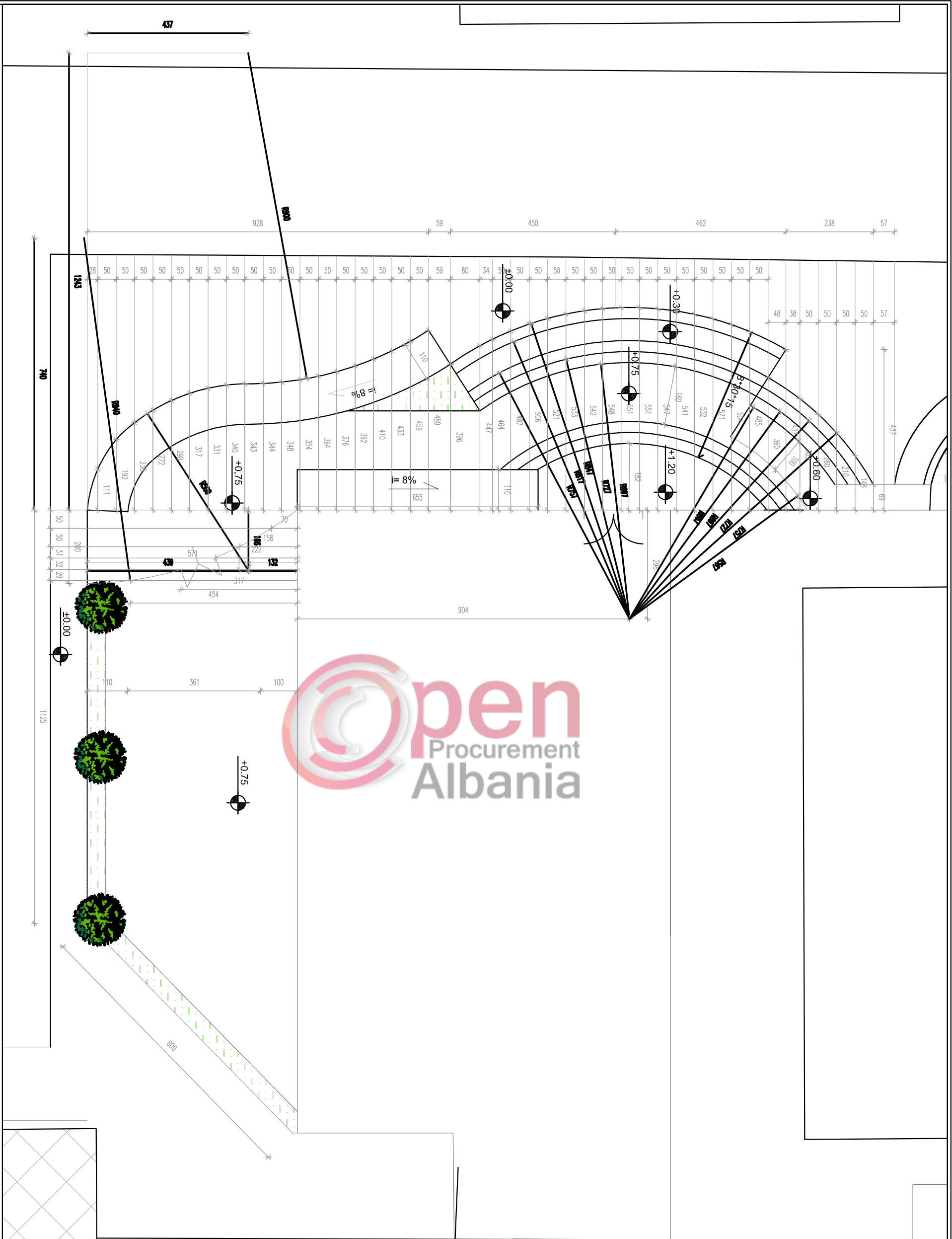
PROJEKT : *Paestra e shkollës 9 -vjeçare "Ismail Qemali" (punime shtesë)*

PLANI I SISTEMIMIT

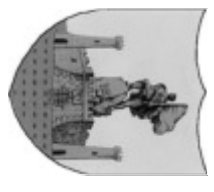
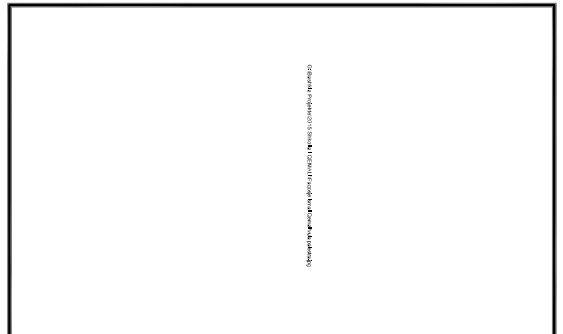
sh: 1:100

VLORE 2017

A-05



PALESTRA E SHKOLLES
9-VJECARE "ISMAL QEMALI"



BASHKIA VLORE

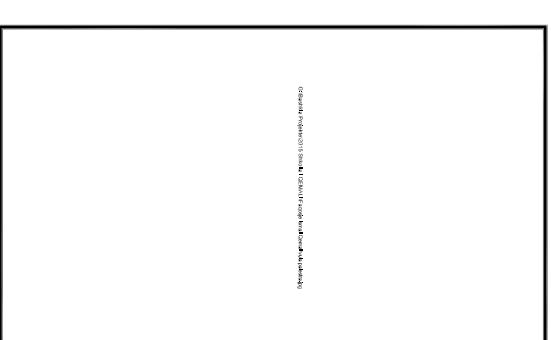
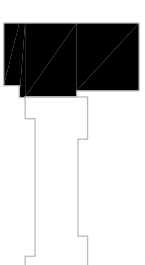
DREJTORIA E
PLANIFIKIMIT DHE
KONTROLLIT TË
ZHVILLIMIT

GRUPI I PROJEKTIMIT:
 Ark. Suela Abazaj
 Ing. Strukturist: Ejlon Amataj
 Ing. Strukturist: Manfred Karocieri
 Ing. Hidro: Ana Çelaj
 Topograf: Kismet Agalliu

PROJEKT : *Paestra e shkolles 9 -vjecare "Ismail Qemali" (punime shitesë)*



PALESTRA E SHKOLLES
9-VJECARE "ISMAL QEMALI"



BASHKIA VLORE

DREJTORIA E
PLANIFIKIMIT DHE
KONTROLLIT TË
ZHVILLIMIT

GRUPI I PROJEKTIMIT:

Ark. Suela Abazaj

Ing. Strukturst: Ejlon Amataj

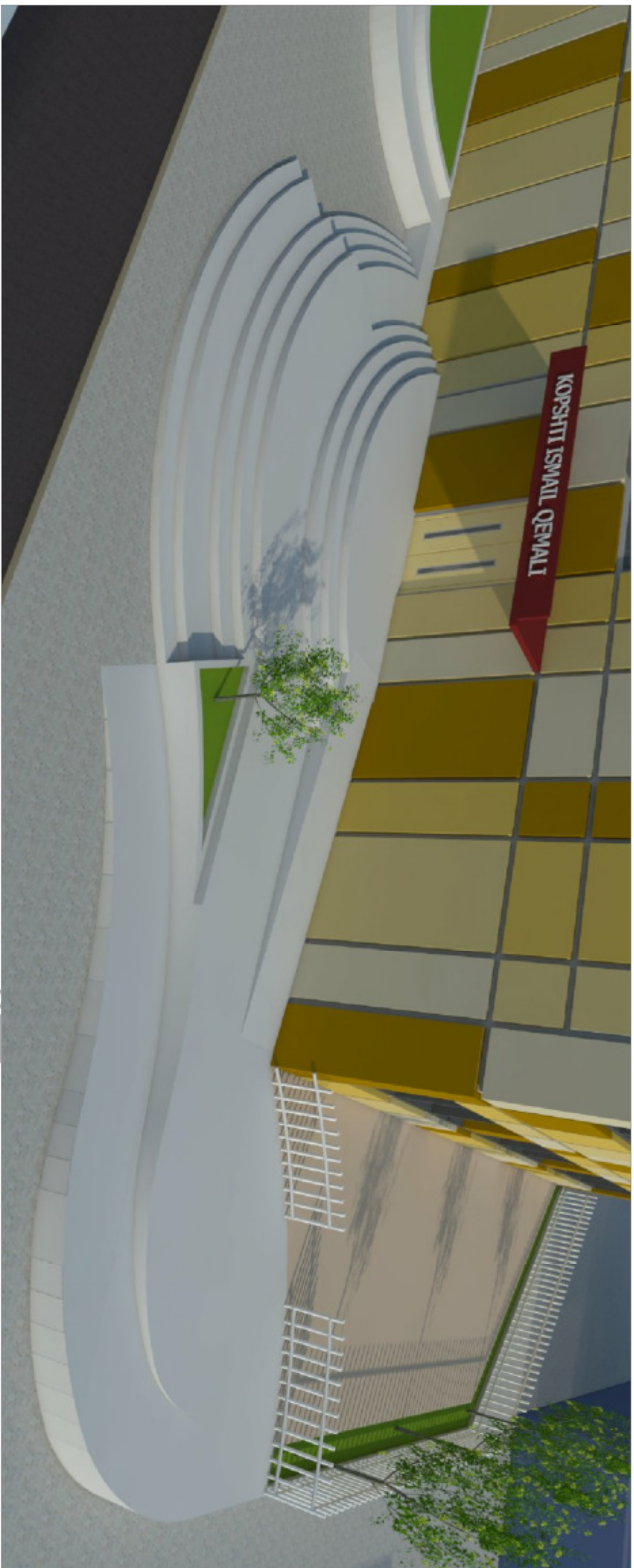
Ing. Strukturst: Mandi Karocieri

Ing. Hidro: Ana Çelaj

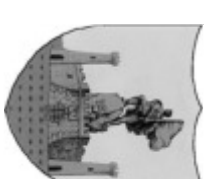
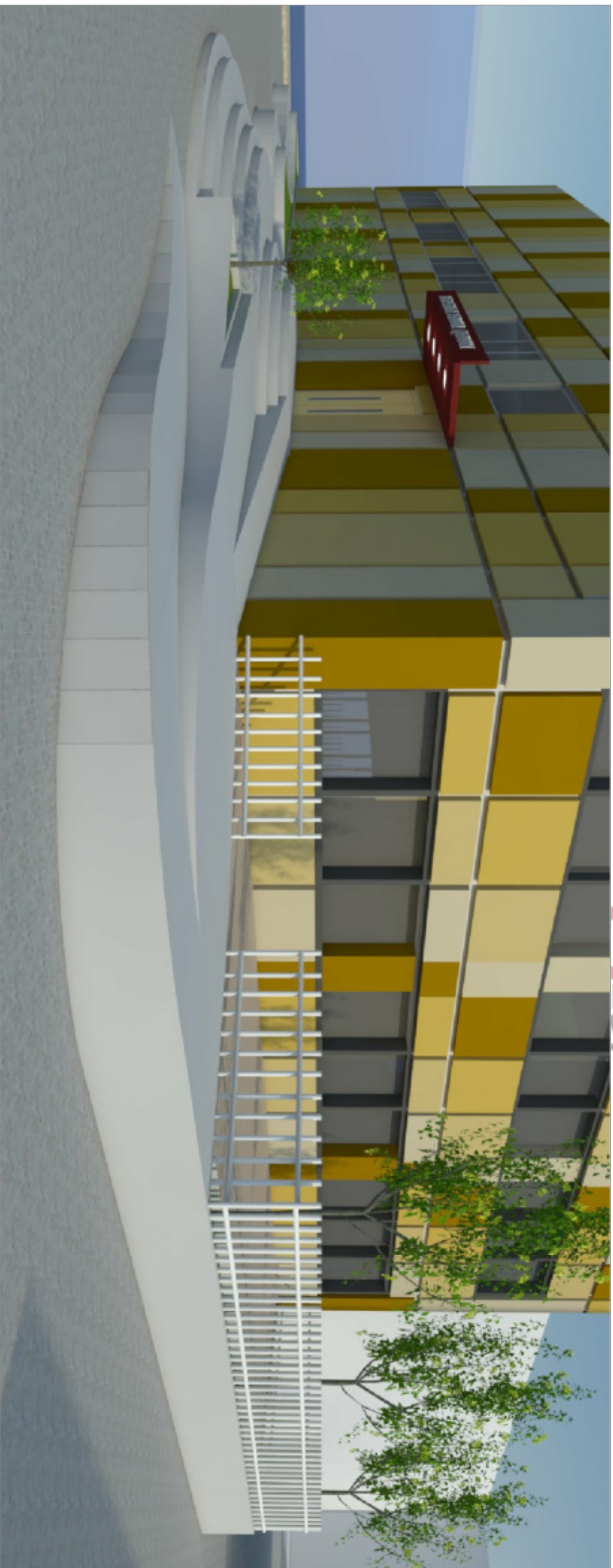
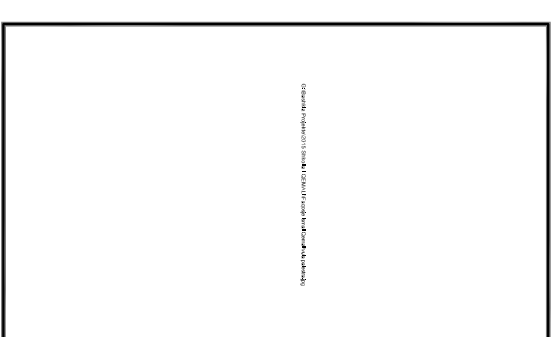
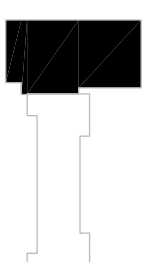
Topograft: Kismet Agalliu



PROJEKT : *Paestra e shkollës 9 -vjeçare "Ismail Qemali" (punime shtesë)*



PALESTRA E SHKOLLËS
9-VJECARE "ISMAIL QEMALI"



BASHKIA VLORE

DREJTORIA E
PLANIFIKIMIT DHE
KONTROLLIT TË
ZHVILLIMIT

GRUPI I PROJEKTIMIT:

Ark. Suela Abazaj

Ing. Struktivist: Ejdon Amataj

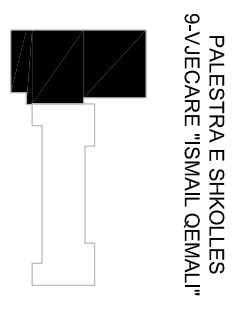
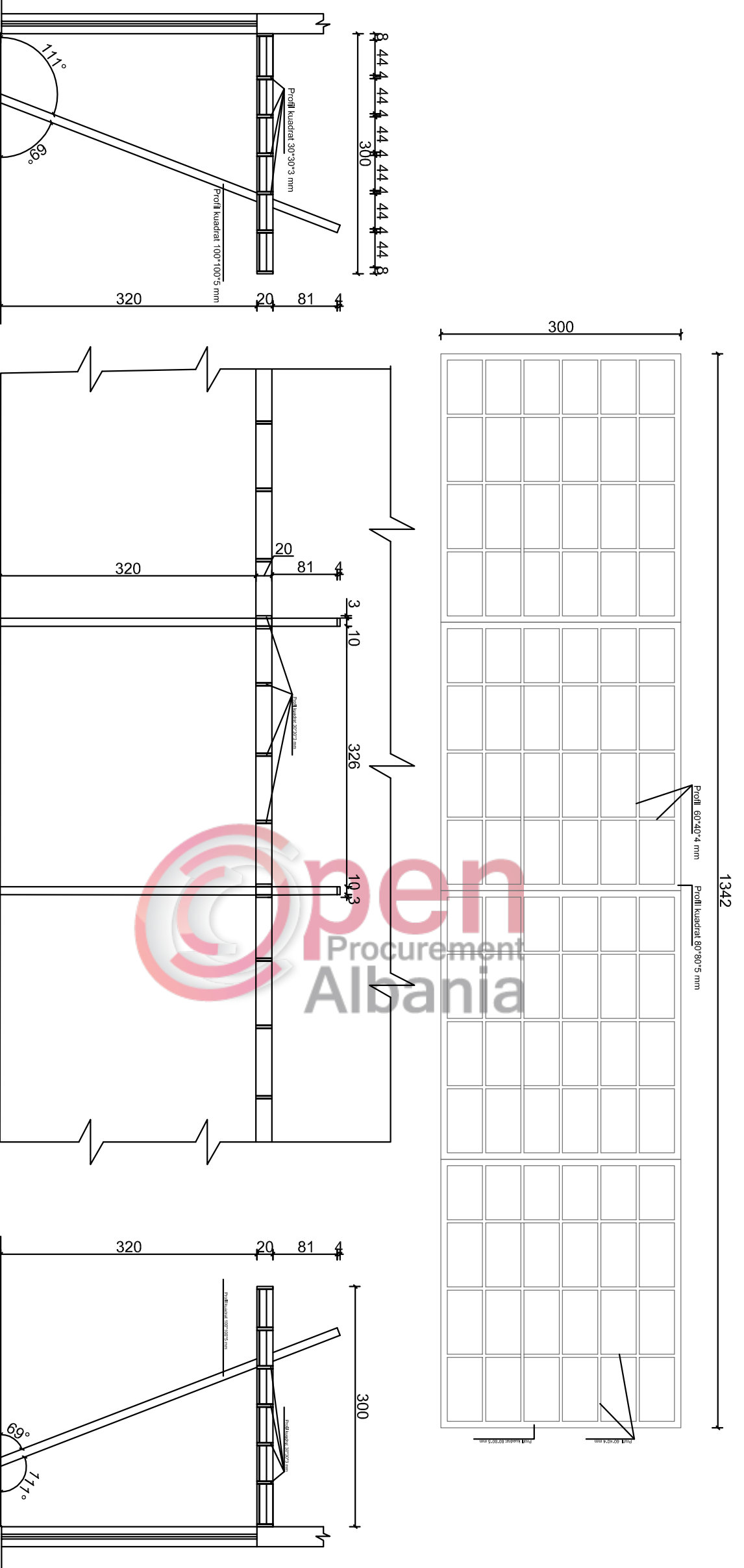
Ing. Struktivist: Mandi Karocieri

Ing. Hidro: Ana Çelaji

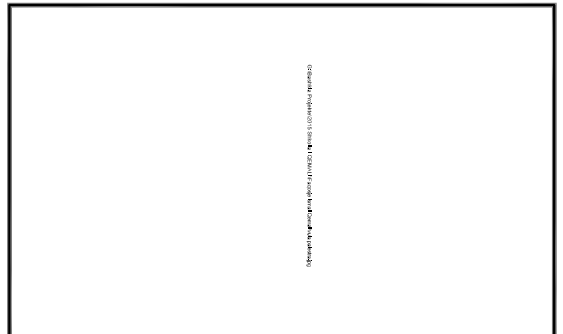
Topograft: Kismet Agalliu

PROJEKT : *Palestra e shkollës 9 -vjeçare "Ismail Qemali" (punime shtesë)*

STREHE METALIKE



PALESTRA E SHKOLLES
9-VJECARE "ISMAL QEMALI"



BASHKIA VLORE

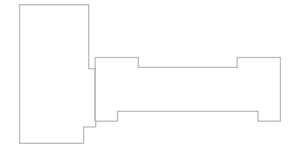
DREJTORIA E
PLANIFIKIMIT DHE
KONTROLLIT TE
ZHVILLIMIT

GRUPI I PROJEKTIMIT:
Ark. Suela Abazaj
Ing. Strukturst: Eijon Amataj
Ing. Strukturst: Manfred Karocieri
Ing. Hidro: Ana Çelaj
Topograft: Kismet Agalliu

PROJEKT : *Paestra e shkolles 9 -vjegare "Ismail Qemali" (punime shitesë)*

PROJEKT : *Lyerja e shkollës 9 -vjeçare "Ismail Qemali"*

PALESTRA E SHKOLLES
9-VJECARE "ISMAIL QEMALI"



BASHKIA VLORE

DREJTORIA E
PLANIFIKIMIT DHE
KONTROLLIT TË
ZHVILLIMIT

GRUPI I PROJEKTIMIT:

Ark. Suela Abazaj

Ing Struktivist: Erjon Amataj

Ing Struktivist: Mandi Karocieri

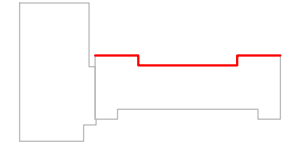
Ing Hidro: Ana Çelaj

Topograf: Kismet Agalliu

VLORE 2017

A-00

PALESTRA E SHKOLLES
9-VJECARE "ISMAIL QEMALI"

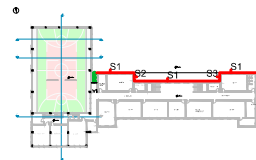


BASHKIA VLORE

DREJTORIA E
PLANIFIKIMIT DHE
KONTROLLIT TË
ZHVILLIMIT

GRUPI I PROJEKTIMIT:

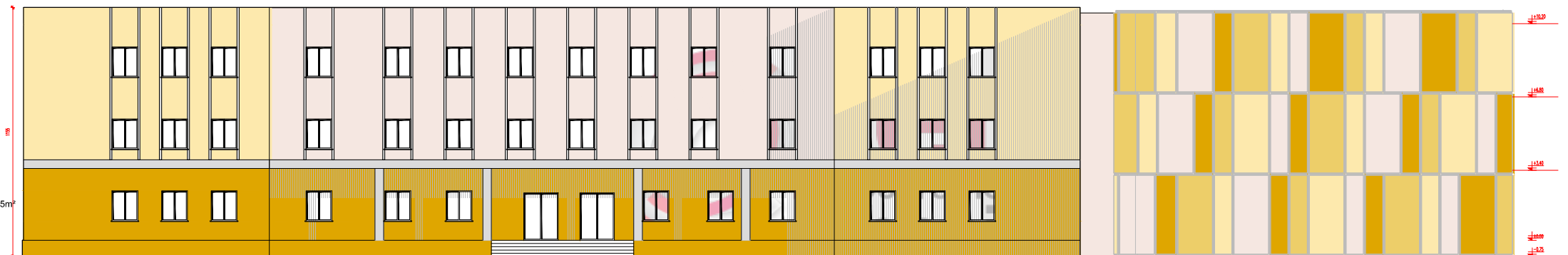
Ark. Suela Abazaj
Ing Struktivist: Erjon Amataj
Ing Struktivist: Mandi Karocieri
Ing Hidro: Ana Çelaj
Topograf: Kismet Agalliu



RAL 080 90 30
RAL 040 90 05
RAL 075 70 80
RAL 080 80 50

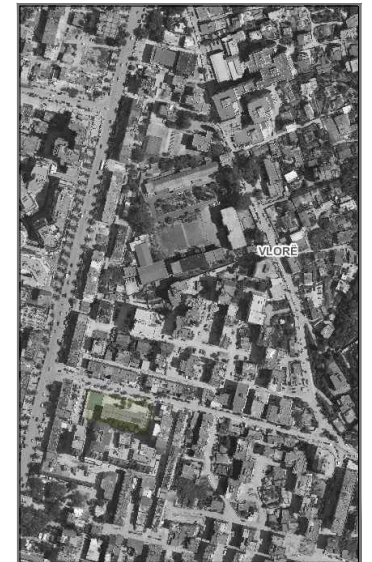
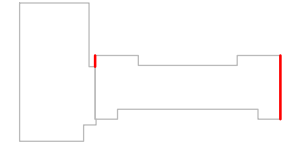
SIP1= 566m²
SIP2= 60m²
SIP3= 60m²
SIP TOTALE faqe ne veri= 686 m²

SIP TOTALE PER LYERJE= 686+686+194+69m²= 1635m²



PROJEKT : *Lyerja e shkollës 9 -vjeçare "Ismail Qemali"*

PALESTRA E SHKOLLES
9-VJECARE "ISMAIL QEMALI"

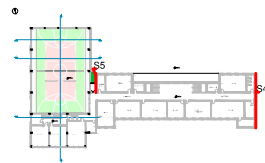


BASHKIA VLORE

DREJTORIA E
PLANIFIKIMIT DHE
KONTROLLIT TË
ZHVILLIMIT

GRUPI I PROJEKTIMIT:

Ark. Suela Abazaj
Ing Struktivist: Erjon Amataj
Ing Struktivist: Mandi Karocieri
Ing Hidro: Ana Çelaj
Topograf: Kismet Agalliu

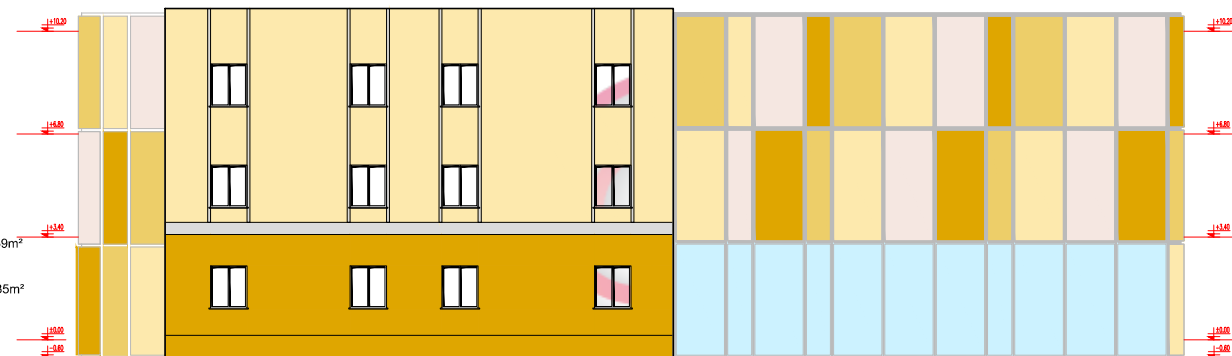


- RAL 060 90 30
- RAL 040 90 05
- RAL 075 70 80
- RAL 060 80 50

SIP4 faqe ne lindje= 194m²

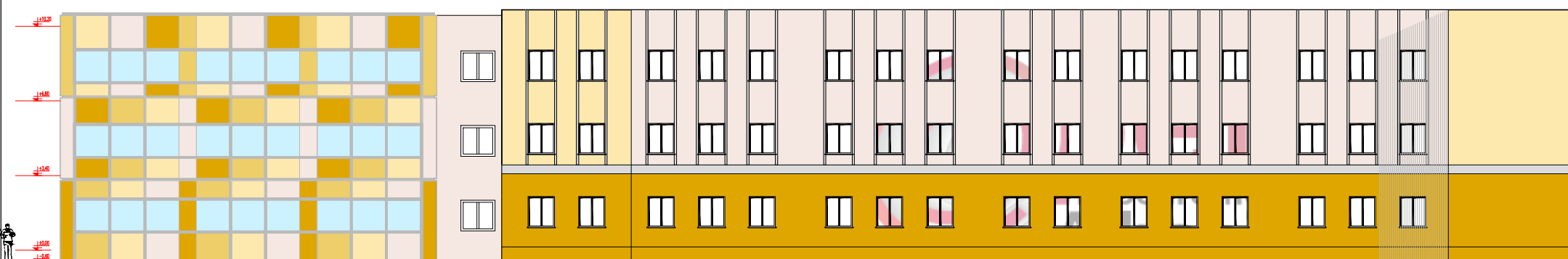
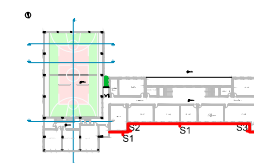
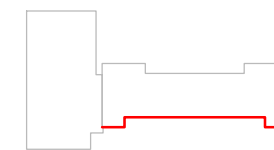
SIP5 faqe ne perendim (pjesa lidhese me palestren)= 69m²

SIP TOTALE PER LYERJE= 686+686+194+69m²= 1635m²



PROJEKT : *Lyerja e shkollës 9 -vjeçare "Ismail Qemali"*

PALESTRA E SHKOLLES
9-VJECARE "ISMAIL QEMALI"



- RAL 080 90 30
- RAL 040 90 05
- RAL 075 70 80
- RAL 080 80 50

SIP1= 566m2
SIP2= 60m2
SIP3= 60m2
SIP TOTALE faqe ne jug= 686 m²

SIP TOTALE PER LYERJE= 686+686+194+69m²= 1635m²



BASHKIA VLORE

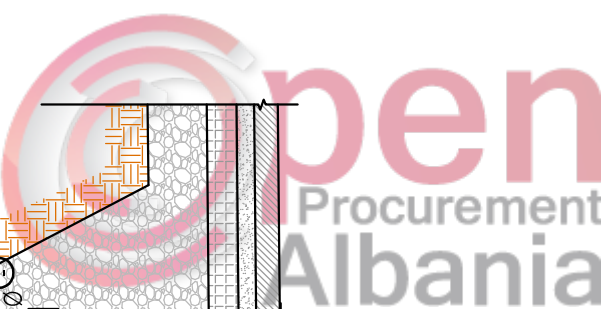
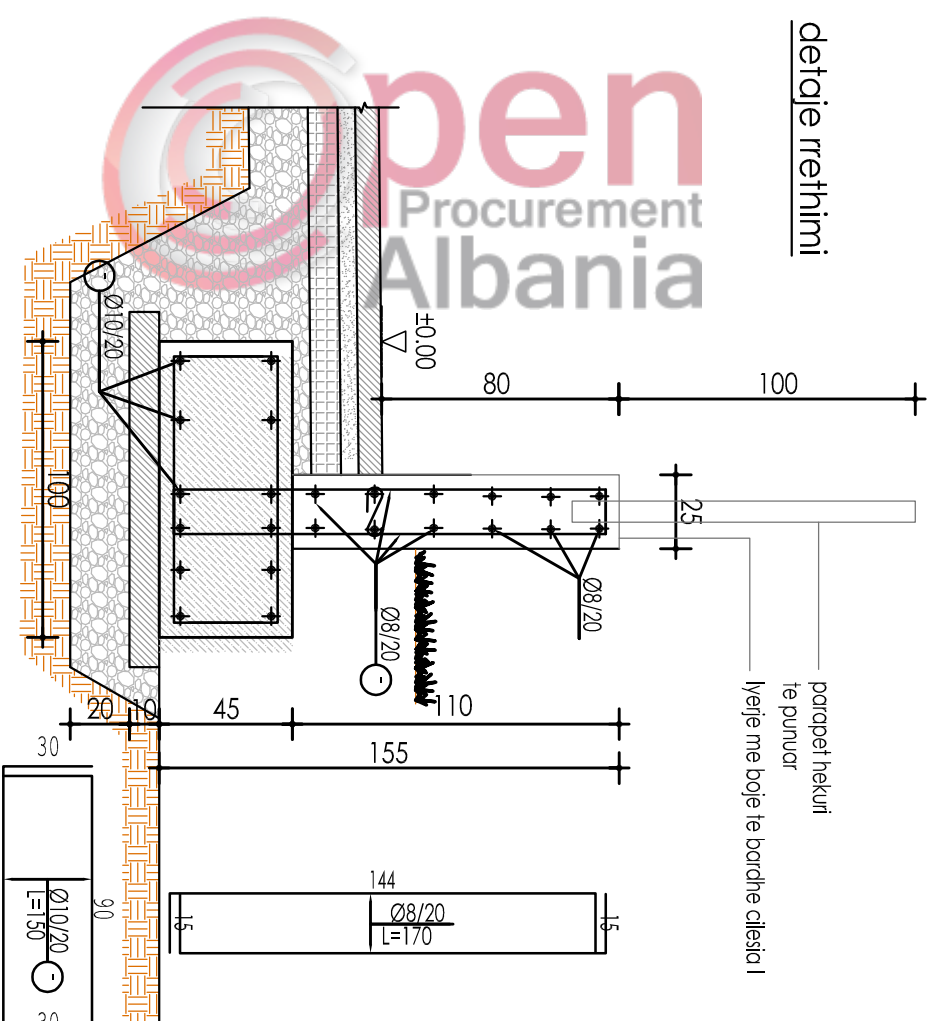
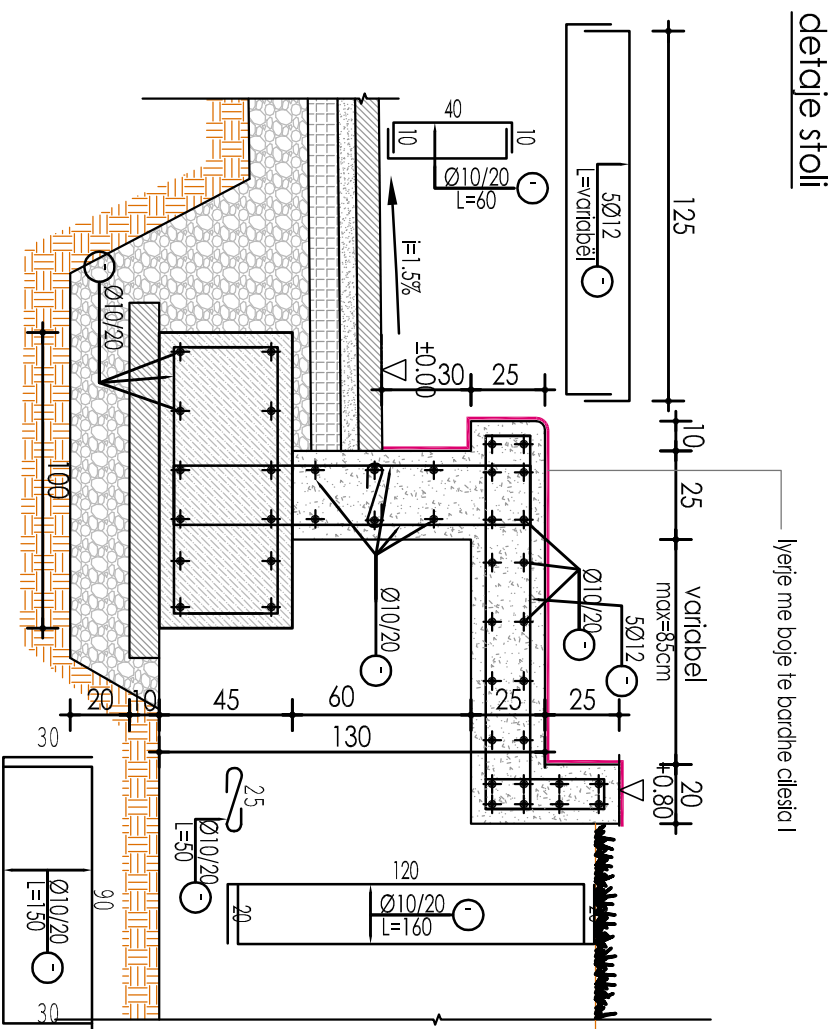
DREJTORIA E
PLANIFIKIMIT DHE
KONTROLLIT TË
ZHVILLIMIT

GRUPI I PROJEKTIMIT:

Ark. Suela Abazaj
Ing Strukuist: Erjon Amataj
Ing Strukuist: Mandi Karocieri
Ing Hidro: Ana Çelaj
Topograf: Kismet Agalliu

PROJEKT : *Lyerja e shkollës 9 -vjeçare "Ismail Qemali"*

DETAJE SISTEMIME TE JASHITME

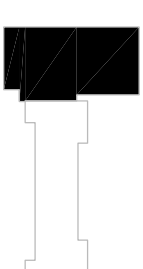


PROJEKT : *Palestra e shkolles 9 -vjeçare "Ismail Qemali"*

PLANIMETRI E DIMENSIONUAR

sh: 1:250

KUOTA ±0.00



PALESTRA E SHKOLLES
9-VJEÇARE "ISMAL QEMALI"



BASHKIA VLORE

DREJTORIA E
PLANIFIKIMIT DHE
KONTROLLIT TE
ZHVILLIMIT

GRUPI I PROJEKTIMIT:

Ark. Suela Abazaj

Ing Strukturst: Eijon Amataj

Ing Strukturst: Manfred Karocieri

Ing Hidro: Ana Çelaj

Topograft: Kismet Agalliu

VLORE 2017

A-05